

Single sealing changeover valves DCX3 - DCX4

The operating conditions are given for information. Some combinations of extreme operating conditions are not always suitable. It is highly recommended to ask for advice from our technical department.

FEATURES

- Fitted as standard with a floating PFA valve seal that can be cleaned and offers outstanding tightness at high temperatures and good resistance to chemical products
- Dismountable pneumatic valve actuator that can be easily transformed into NO (Normally Open) - NC (Normally Closed) or DA (Double Acting)
- Connection of actuators and shut-off units with clamps for easier maintenance and offering a variety of options
- Spherical body with thick walls guaranteeing excellent resistance to expansion constraints and offering a variety of configurations: + - T - L - L/L - T/L

SPECIFICATIONS

DIMENSIONS

- SMS - DIN - US
from DN 25 (1") to DN 104 (4") for the manual version
from DN 25 (1") to DN 150 (6") for the automatic version

MATERIALS

- Body: stainless steel 1.4404 / 316L
- Shut-off unit: stainless steel 1.4404 / 316L
- Valve seal: floating PFA - EPDM
fluorinated elastomer (FKM) or silicon
- Other seals: EPDM - fluorinated elastomer (FKM) or silicon
- Operating devices: stainless steel 1.4301 / 304

CONNECTIONS

- | CONNECTION TYPES | STANDARDS |
|------------------|-------------------------|
| Welded | SMS - DIN - US standard |
| Threaded | SMS - DIN |
| Liner-nut | SMS - DIN |
| Clamp | US standard |

OPTIONS

- Elastomer seal tightness
- Long stroke for maximum valve disengage

SIGNALLING EQUIPMENT

- Visible on single or double stainless steel bracket
- Point-to-point or AS-i control unit
- ICS (from DN 25 to DN 80)
- ACS (from DN 25 to DN 150)

SURFACE CONDITIONS

- RA exterior = 1.2 µm (150 grit)
- RA interior = 0.8 µm (180 grit)

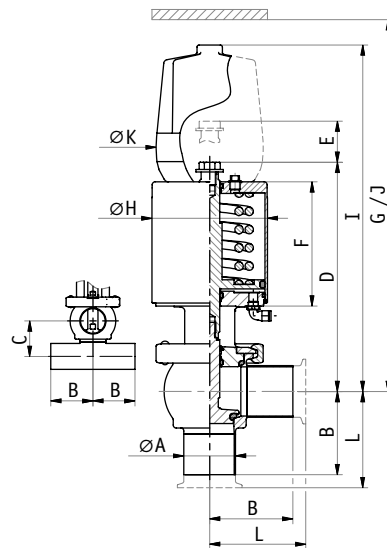
SERVICE CONDITIONS

- Max. temperature: + 140°C/+ 284°F
(temperature depending on seal type)
- Min. temperature: - 5°C/+ 23°F
- Max. working pressure: 8 bar (800 kPa)/116 psi
- Actuator air supply pressure:
min. 5.5 bar (550 kPa)/80 psi
max. 8 bar (800 kPa)/116 psi
- Vacuum resistance: 0.4 cm³/s

Changeover valve

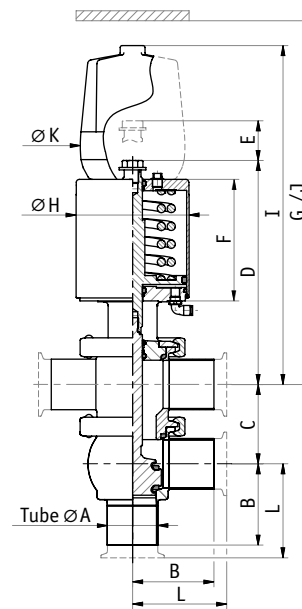


DCX3 manual



DCX3 automatic

Changeover valve



DCX4 automatic



Tube ØA	B	C		D		E (stroke)		F	G (without unit)	ØH	I	J (with unit)		Weight in Kg		
		DCX3	DCX4	DCX3	DCX4	DCX3	DCX4					DCX3	DCX4			
SMS 22.6/25	55	45	55	193	192	17	14	110	280	89	337	465	104	70	4.5	6
SMS 35.6/38	70	55	70	195	195	21	18	110	300	89	344	465	104	85	5	6.5
SMS 48.5/51	82	70	80	224	225	29	27	123	340	114	373	495	104	97	8	9
SMS 60.3/63.5	105	85	95	276	275	35	32	159	400	167	423	535	104	125	17	20
SMS 72/76	110	95	105	281	280	35	32	159	430	167	429	545	104	130	17	21
SMS 100/104	130	125	150	333	335	40	35	181	530	216	483	622	140	155	33	40
DIN 26/29	55	47	55	192	192	17	14	110	280	89	337	465	104	-	4.6	5
DIN 32/35	55	51	65	197	194	17	17	110	300	89	342	465	104	-	4.7	5
DIN 38/41	70	55	70	195	195	21	18	110	310	89	344	465	104	-	5	5
DIN 50/53	80	71	80	224	225	29	27	123	340	114	373	495	104	-	8	9
DIN 66/70	108	93	100	277	277	35	31	159	400	167	425	535	104	-	17	20
DIN 81/85	115	105	130	288	291	40	36	159	420	167	455	545	104	-	18	23
DIN 100/104	130	125	150	333	335	40	35	181	530	216	483	622	140	-	33.1	45.8
DIN 125/129	160	155	165	488	488	70	56	285	590	270	636	752	140	-	62	73
DIN 150/154	180	180	195	500	500	70	62	285	620	270	647	782	140	-	65	78
US 1" (22.1/25.4)	51	45	82.5	192	192	17	14	110	280	89	337	465	104	64	4.5	6
US 1" 1/2 (34.8/38.1)	57	55	82.5	195	195	21	18	110	300	89	344	465	104	70	5	6.5
US 2" (47.5/50.8)	76	70	95	224	225	29	27	123	350	114	373	495	104	89	7.5	10.2
US 2" 1/2 (60.2/63.5)	76	85	108	276	275	35	32	159	420	167	423	555	104	89	15	19.3
US 3" (72.9/76.1)	82	95	120	281	280	35	32	159	430	167	429	565	104	95	15.5	19.1
US 4" (97.4/101.6)	130	125	165	333	335	40	35	181	540	216	483	612	140	146	33	40
US 6" (146.9/152.4)	180	180	195	500	500	70	62	285	620	270	647	782	140	200	65	78

Fractional changeover valves DCX3 - DCX4

The operating conditions are given for information. Some combinations of extreme operating conditions are not always suitable. It is highly recommended to ask for advice from our technical department.

FEATURES

- High sealing pressure
- Self-contained and compact body with a variety of configuration options: + - T - L - L/L - T/L
- Quick to disassemble

SPECIFICATIONS

DIMENSIONS

- US
DN 1/2" and DN 3/4"

MATERIALS

- Body: stainless steel 1.4404 / 316L
- Shut-off unit: stainless steel 1.4404 / 316L
- Valve seal: PFA - EPDM - fluorinated elastomer (FKM) or silicon
- Handle: plastic material
- Actuator: stainless steel 1.4301 / 304

CONNECTIONS

- To weld
- Clamp

OPERATING DEVICES

- MANUAL**
Ergonomic handle with visual opening indicator
- AUTOMATIC**
Single or double acting compact pneumatic valve actuator

OPTION

- Adjustable actuator to pre-set the pressure for use as relief valve

SIGNALLING EQUIPMENT

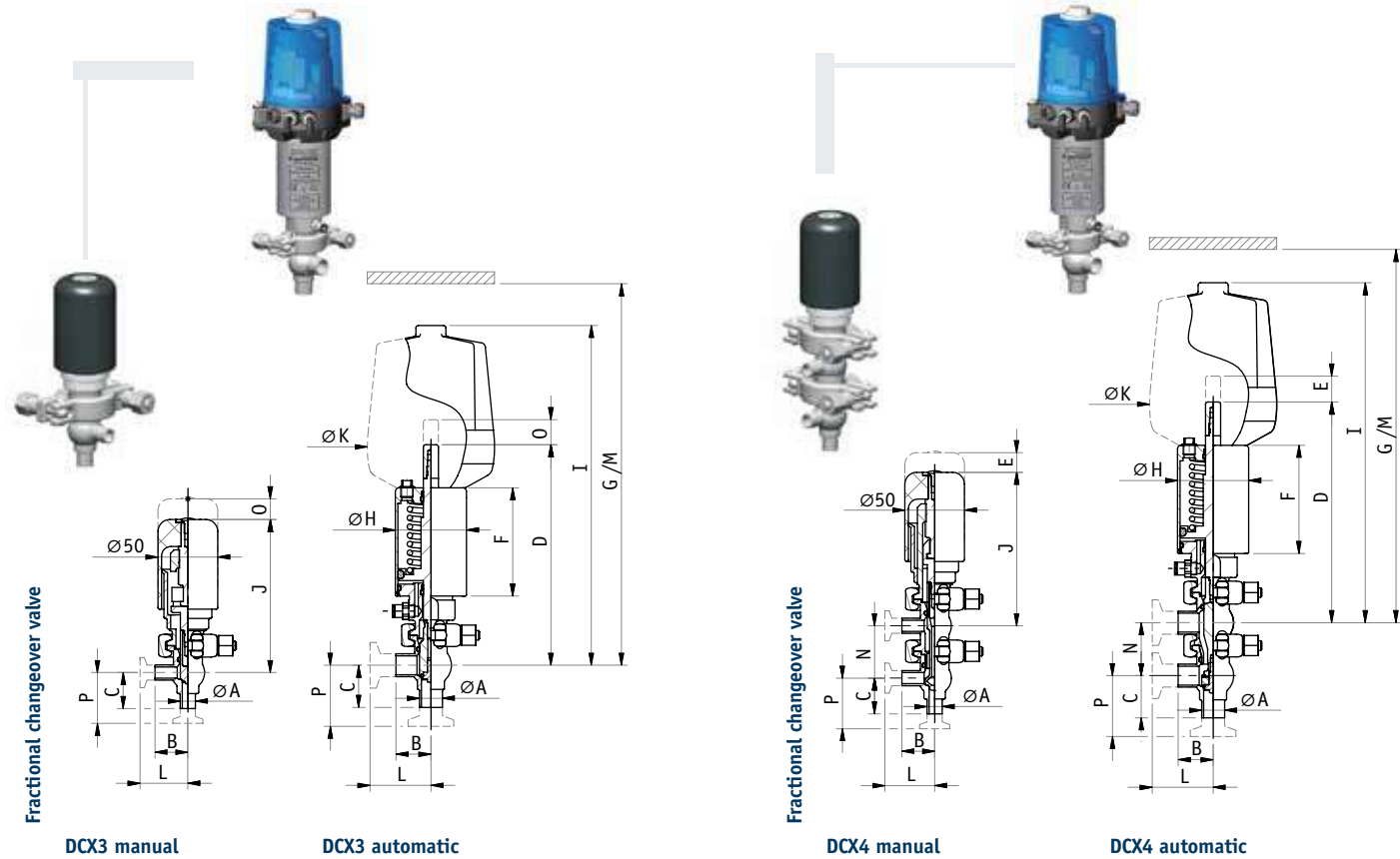
- Visible on single or double stainless steel bracket
- Point-to-point or AS-i control unit
- ICS (DN 1/2" and DN 3/4")

SURFACE CONDITIONS

- RA exterior = 1.2 µm (150 grit)
- RA interior = 0.8 µm (180 grit)

SERVICE CONDITIONS

- Max. temperature: + 140°C/+ 284°F (temperature depending on seal type)
- Min. temperature: - 5°C/+ 23°F
- Max. working pressure: 18 bar (1800 kPa)/261 psi
- Actuator air supply pressure:
min. 5.5 bar (550 kPa)/80 psi
max. 8 bar (800 kPa)/116 psi
- Vacuum resistance: 0.4 cm³/s



Tube ØA	B	C	D	E	F	G	ØH	I	J	ØK	L	M	N	O	P	Weight in Kg DCX3		Weight in Kg DCX4	
																MANUAL	AUTO	MANUAL	AUTO
US 1/2" (9.4/12.7)	27.5	30	192	10.5	90	215	59	337	128	104	40	465	44	12	42.5	0.6	1.5	0.7	1.6
US 3/4" (15.75/19.05)	29	35	195	11	90	220	59	344	130	104	41.5	465	44	12	47.5	0.6	1.5	0.7	1.7
US 1" (22.1/25.4)	35.3	40	212	14.7	103	240	71	373	130	104	64	495	55	15	64	1	1.9	1.1	2

Diaphragm / Aseptic bearing changeover valves DCX3

The operating conditions are given for information. Some combinations of extreme operating conditions are not always suitable. It is highly recommended to ask for advice from our technical department.

DCX3 diaphragm changeover valve

FEATURES

- Same features as standard DCX3 (floating seal – thick body, etc...)
- Fitted with PTFE (PolyTetraFluorEthylene) diaphragm to ensure a physical barrier between the inside of the valve and the outside environment and with microvalve to warn of a leak or possible seal damage
- The stroke on these valves is slightly shorter than on a standard DCX valve.

SPECIFICATIONS

DIMENSIONS

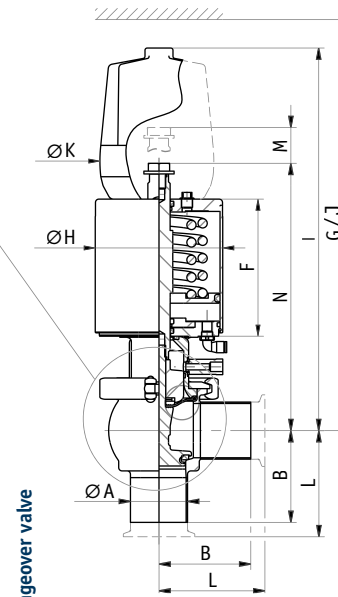
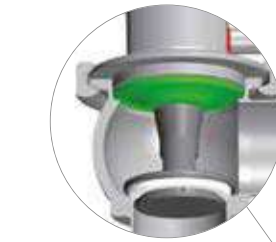
- SMS - DIN - US from DN 25 (1") to DN 150 (6")

OPTIONS

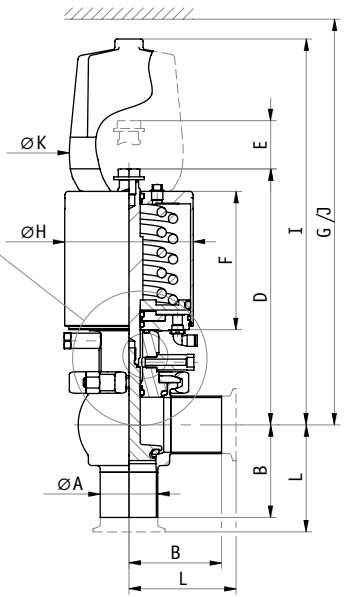
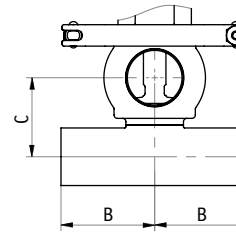
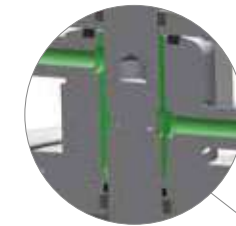
Deformable sealing diaphragm in PTFE and alcohol barrier
On request available up to DN 250 (10")

SERVICE CONDITIONS

- Max. temperature: +140°C/+ 284°F (temperature depending on seal type)
- Min. temperature: +1°C/+ 33,8°F
- Max. working pressure: 8 bar (800 kPa)/116 psi
- Actuator air supply pressure: min. 5.5 bar (550 kPa)/80 psi max. 8 bar (800 kPa)/116 psi
- Vacuum resistance: 0,4 cm³/s



DCX3 diaphragm type



DCX3 with aseptic bearing



DCX3 changeover valve with aseptic bearing

FEATURES

- Same features as standard DCX3 (floating seal – thick body, etc...)
- Fitted with an aseptic guide bearing which steam or fluid (washing - rinsing) circulates through to clean the parts of the plug, which come into contact with the outside environment on the valve outstroke
When the valve closes, the stem in contact with the outside environment is sterilized before penetrating the valve body.

SPECIFICATIONS

DIMENSIONS

- SMS - DIN - US from DN 25 (1") to DN 150 (6")

OPTION

Cooling bearing

SERVICE CONDITIONS

- Max. temperature: + 140°C/+ 284°F (temperature depending on seal type)
- Min. temperature: - 5°C/+ 23°F
- Max. working pressure: 8 bar (800 kPa)/116 psi
- Actuator air supply pressure: min. 5.5 bar (550 kPa)/80 psi max. 8 bar (800 kPa)/116 psi
- Vacuum resistance: 0,4 cm³/s

DIMENSIONS Tube ØA	COMMON DIMENSIONS									WITH DIAPHRAGM			WITH ASEPTIC BEARING		
	B	C	F	G	ØH	I	J	ØK	L	M	N	Weight in Kg	D	E	Weight in Kg
	(without unit)									(stroke)			(stroke)		
	(with unit)														
SMS 22,6/25	55	45	110	280	89	337	465	104	70	12	205	6	193	17	5
SMS 35,6/38	70	55	110	300	89	344	465	104	85	12	205	6,5	195	21	5,5
SMS 48,5/51	82	70	123	340	114	373	495	104	97	17	239	9,5	224	29	8,5
SMS 60,3/63,5	105	85	159	400	167	423	535	104	125	26	292	18,5	276	35	18
SMS 72/76	110	95	159	430	167	429	545	104	130	26	292	18,5	281	35	18
SMS 100/104	130	125	181	530	216	483	622	140	155	35	342	36	333	40	34
DIN 26/29	55	47	110	280	89	337	465	104	-	12	205	6	192	17	5
DIN 32/35	55	51	110	300	89	342	465	104	-	12	205	6	197	17	5
DIN 38/41	70	55	110	310	89	344	465	104	-	12	205	6,5	195	21	5,5
DIN 50/53	80	71	123	340	114	373	495	104	-	17	239	9,5	224	29	8,5
DIN 66/70	108	93	159	400	167	425	535	104	-	26	292	18,5	277	35	18
DIN 81/85	115	105	159	420	167	455	545	104	-	35	342	19,5	288	40	19
DIN 100/104	130	125	181	530	216	483	622	140	-	35	342	36	333	40	34
DIN 125/129	160	155	285	590	270	636	752	140	-	36	513	69	488	70	68
DIN 150/154	180	180	285	620	270	647	782	140	-	36	525	81	500	70	80
US 1" (22,1/25,4)	51	45	110	280	89	337	465	104	64	12	205	6	192	17	5
US 1 1/2 (34,8/38,1)	57	55	110	300	89	344	465	104	70	12	205	6	195	21	5,5
US 2" (47,5/50,8)	76	70	123	350	114	373	505	104	89	17	239	9,5	224	29	8,5
US 2 1/2 (60,2/63,5)	76	85	159	420	167	423	555	104	89	26	292	18,5	276	35	18
US 3" (72,9/76,1)	82	95	159	430	167	429	555	104	95	26	292	18,5	281	35	18
US 4" (97,4/101,6)	130	125	181	540	216	483	612	140	146	35	342	36	333	40	34
US 6" (146,9/152,4)	180	180	285	620	270	647	782	140	200	36	525	81	500	70	80

The operating conditions are given for information. Some combinations of extreme operating conditions are not always suitable. It is highly recommended to ask for advice from our technical department.

FEATURES

- Fitted with a positioner enabling the flow, pressure or level to be regulated on all supply fluids using a signal (0)4/20 mA or 0/10 V
- Profiled plug (without sealing)

SPECIFICATIONS

DIMENSIONS

- SMS - DIN - US
from DN 25 (1") to DN 100 (4")

MATERIALS

Body:	stainless steel 1.4404 / 316L
Shut-off unit:	stainless steel 1.4404 / 316L
Valve seal:	EPDM fluorinated elastomer (FKM) or silicon
Operating devices:	stainless steel 1.4301 / 304

CONNECTIONS

CONNECTION TYPES	STANDARDS
To weld	SMS - DIN - US standard
Threaded	SMS - DIN
Liner-nut	SMS - DIN
Clamp	US standard

OPTION

Elastomer seal for absolute tightness

SIGNALLING EQUIPMENT

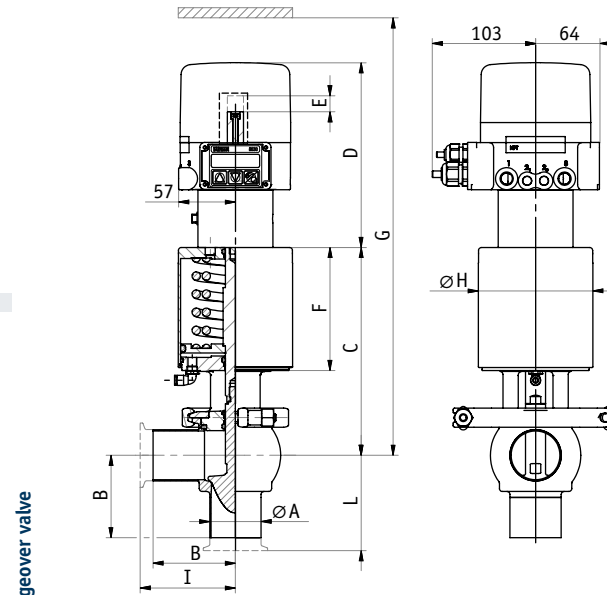
(0) 4/20 mA or 0/10 V positioner

SURFACE CONDITIONS

- RA exterior = 1.2 µm (150 grit)
- RA interior = 0.8 µm (180 grit)

SERVICE CONDITIONS

- Max. temperature: + 140°C/+ 284°F
(temperature depending on seal type)
- Min. temperature: - 5°C/+ 23°F
- Max. working pressure: 8 bar (800 kPa)/116 psi with elastomer seal
- Actuator air supply pressure:
min. 5.5 bar (550 kPa)/80 psi
max. 8 bar (800 kPa)/116 psi
- Vacuum resistance: 0,7 cm³/s



DCX3 regulating type



Tube ØA	B	C	D	E (stroke)	F	G (with unit)	ØH	I	Weight in Kg
SMS 22,6/25	55	170	165	17	110	390	89	70	5,5
SMS 35,6/38	70	177	165	21	110	400	89	85	5,5
SMS 48,5/51	82	206	185	29	123	500	114	97	8,5
SMS 60,3/63,5	105	256	185	35	159	560	167	125	17,5
SMS 72/76	110	262	185	35	159	590	167	130	17,5
SMS 100/104	130	312	185	40	181	660	216	155	29,5
DIN 26/29	55	170	165	17	110	390	89	-	5,5
DIN 32/35	55	175	165	17	110	400	89	-	5,5
DIN 38/41	70	177	165	21	110	400	89	-	5,5
DIN 50/53	80	206	185	29	123	500	114	-	8,5
DIN 66/70	108	258	185	35	159	570	167	-	17,5
DIN 81/85	115	268	185	40	159	580	167	-	20,5
DIN 100/104	130	312	185	40	181	660	216	-	29,5
US 1" (22,1/25,4)	51	170	165	17	110	390	89	64	5,5
US 1 1/2 (34,8/38,1)	57	177	165	21	110	400	89	70	5,5
US 2" (47,5/50,8)	76	206	185	29	123	500	114	89	8,5
US 2 1/2 (60,2/63,5)	76	256	185	35	159	560	167	89	17,5
US 3" (72,9/76,1)	82	262	185	35	159	590	167	95	17,5
US 4" (97,4/101,6)	130	312	185	40	181	660	216	146	29,5

Double sealing changeover valve DCX3 DE

The operating conditions are given for information. Some combinations of extreme operating conditions are not always suitable. It is highly recommended to ask for advice from our technical department.

FEATURES

- Non-independent double valve system
- Leakage chamber with indicator preventing any risk of mixing between the lines
- Able to absorb overpressure under the plug
- Spherical body with thick walls guaranteeing excellent resistance to expansion constraints

SPECIFICATIONS

DIMENSIONS

- SMS - DIN - US
from DN 51 (2") to DN 100 (4")

MATERIALS

- Body: stainless steel 1.4404 / 316L
 Shut-off unit: stainless steel 1.4404 / 316L
 Valve seal: EPDM - fluorinated elastomer (FKM) or silicon
 Actuator: stainless steel 1.4301 / 304

CONNECTIONS

- | CONNECTION TYPES | STANDARDS |
|------------------|-------------------------|
| To weld | SMS - DIN - US standard |
| Threaded | SMS - DIN |
| Liner-nut | SMS - DIN |
| Clamp | US standard |

OPTION

Washing microvalve that cleans the leakage chamber and the leakage microvalve when the valve is closed (requiring a 2nd solenoid valve in the control unit)

SIGNALLING EQUIPMENT

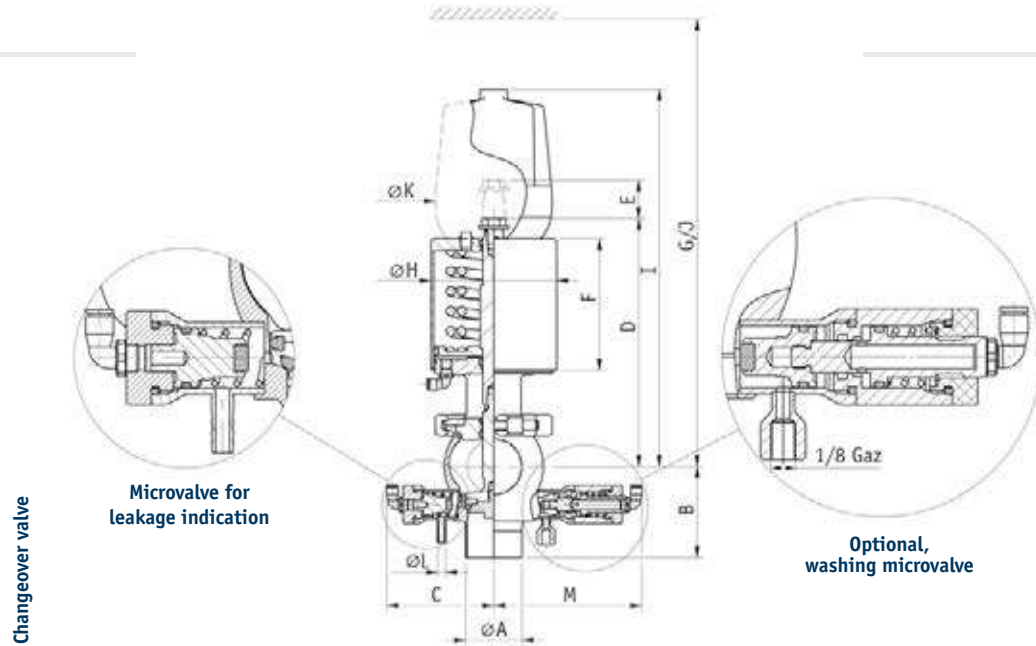
Visible on single or double stainless steel bracket
 Point-to-point or AS-i control unit
 ICS (from DN 51 to DN 80)
 ACS (from DN 51 to DN 104)

SURFACE CONDITIONS

- RA exterior = 1.2 µm (150 grit)
- RA interior = 0.8 µm (180 grit)

SERVICE CONDITIONS

- Max. temperature: + 120°C/+ 248°F
- Min. temperature: 0°C/+ 32°F
- Max. working pressure: 8 bar (800 kPa)/116 psi
- Actuator air supply pressure:
min. 5.5 bar (550 kPa)/80 psi
max. 8 bar (800 kPa)/116 psi
- Vacuum resistance: 0.3 cm³/s



DCX3 DE double sealing



Tube ØA	B	C	D	E (stroke)	F	G (without unit)	ØH	I	J (with unit)	ØK	ØL	M	Weight in kg
SMS 48.5/51	82	97	227	29	123	360	114	377	505	104	8	134	8
SMS 60.3/63.5	105	107	276	35	159	430	167	425	545	104	8	144	17
SMS 72/76	110	113	282	35	159	460	167	432	565	104	8	152	17.5
SMS 100/104	130	127	338	40	181	550	216	485	622	140	8	166	36.5
DIN 50/53	80	97	227	29	123	360	114	377	505	104	8	134	8
DIN 66/70	108	113	279	35	159	460	167	428	565	104	8	152	17.5
DIN 81/85	115	127	288	40	159	470	167	439	575	104	8	166	18
DIN 100/104	130	127	338	40	181	550	216	485	622	140	8	166	37
US 2" (47.5/50.8)	76	97	227	29	123	370	114	377	505	104	8	134	8
US 2"1/2 (60.2/63.5)	76	107	276	35	159	430	167	425	545	104	8	144	17
US 3" (72.9/76.1)	82	113	282	35	159	460	167	432	565	104	8	152	17.5
US 4" (97.4/101.6)	130	127	338	40	181	550	216	485	622	140	8	166	36.5

DCX3 adjustable relief valve

The operating conditions are given for information. Some combinations of extreme operating conditions are not always suitable. It is highly recommended to ask for advice from our technical department.

DCX3 relief valve

FEATURES

- A predefined pressure enables the main circuit to be off-loaded thus protecting certain equipment or circuits
- Actuator with special spring
- Possibility to add additional air thanks to an unit with a single regulator

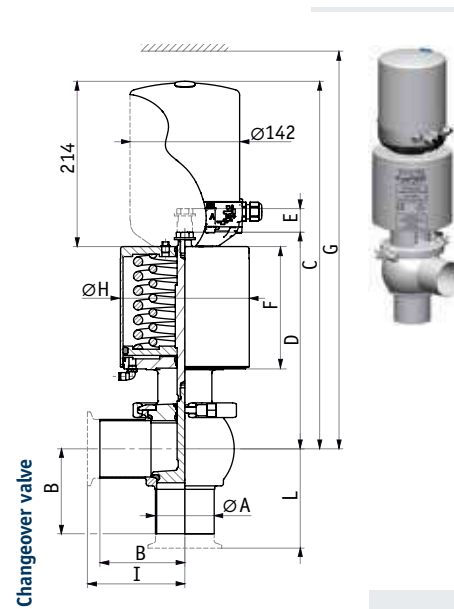
SPECIFICATIONS

DIMENSIONS

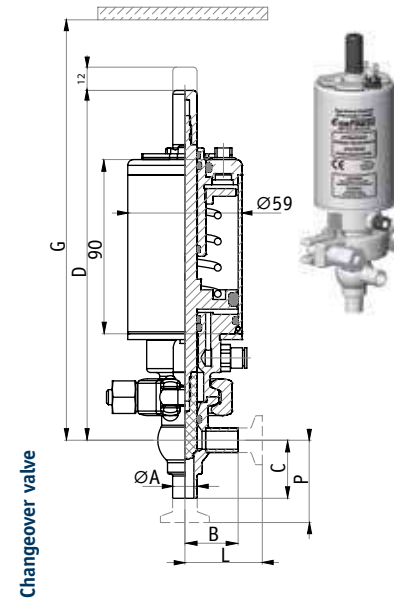
- SMS - DIN - US from DN 25 (1") to DN 100 (4")

SERVICE CONDITIONS

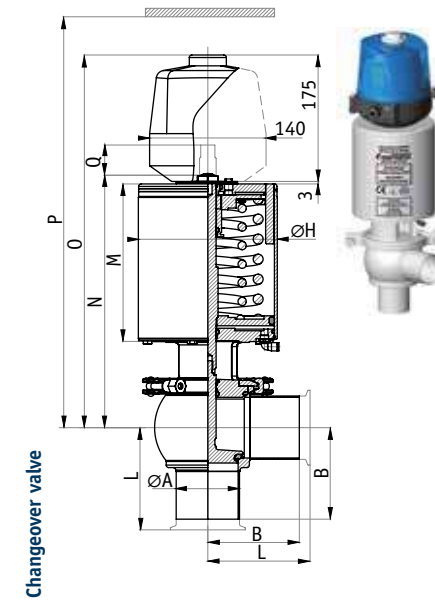
- Max. temperature: + 140°C/+ 284°F
- Min. temperature: - 5°C/+ 23°F
- Max. working pressure: 8 to 12 bar (800 to 1200 kPa)/116 to 174 psi depending on the diameter
- Tolerance for pressure adjustment: ±15 %
- Actuator air supply pressure: min. 5.5 bar (550 kPa)/80 psi max. 8 bar (800 kPa)/116 psi
- Vacuum resistance: 0.4 cm³/s



DCX3 relief valve with additional air



DCX3 fractional mechanical relief valve



DCX3 mechanical relief valve

DCX3 mechanical relief valve

FEATURES

- The DCX3 adjustable relief valve combines security and precision thanks to its adjustable system with fine thread.
- A manual adjustment with a standard wrench allows an accurate adjustment.
- Standard or balanced plug
- PFA or elastomer seal
- One or two spring depending on its configuration

SPECIFICATIONS

DIMENSIONS

- SMS - DIN - US DN1/2" and DN3/4" - from DN25 (1") to DN100 (4")

SERVICE CONDITIONS

- Max. temperature: + 140°C/+ 284°F
- Min. temperature: - 5°C/+ 23°F
- Max. working pressure: 0,2 to 10 bar (20 to 1000 kPa)/3 to 145 psi depending on the diameter
- Tolerance for pressure adjustment: reduced thanks to its fine thread
- Actuator air supply pressure: min. 5.5 bar (550 kPa)/80 psi max. 8 bar (800 kPa)/116 psi
- Vacuum resistance: 0.4 cm³/s

DIMENSIONS Tube ØA	COMMON DIMENSIONS					RELIEF VALVE ADDITIONAL AIR				MECHANICAL RELIEF VALVE					Weight in Kg	
	B	E (stroke)	F	ØH	L	C	D	G (with unit)	Weight in Kg	M	N	O	P (with unit)	Q		R (with unit)
SMS 22,6/25	55	17	110	89	70	415	193	490	4	109	171	335	482	18	400	6,7
SMS 35,6/38	70	21	110	89	85	422	195	490	4	109	189	355	502	22	420	6,9
SMS 48,5/51	82	29	123	114	97	451	224	520	7	132	228	369	512	30	430	9,7
SMS 60,3/63,5	105	35	159	167	125	501	276	590	16	190	298	464	612	37	530	18,5
SMS 72/76	110	35	159	167	130	507	281	600	16	190	304	467	612	37	530	18,5
SMS 100/104	130	40	181	216	155	557	333	750	28	217	361	526	672	40	590	38,4
DIN 26/29	55	17	110	89	-	415	192	490	4	109	170	335	482	18	400	6,7
DIN 32/35	55	17	110	89	-	420	197	490	4	109	191	353	502	18	420	6,9
DIN 38/41	70	21	110	89	-	422	195	490	4	109	189	355	502	22	420	6,9
DIN 50/53	80	29	123	114	-	451	224	520	7	132	228	369	512	30	430	9,7
DIN 66/70	108	35	159	167	-	503	277	590	16	190	299	466	612	37	530	18,5
DIN 81/85	115	40	159	167	-	548	288	610	27	190	311	512	622	40	540	37,4
DIN 100/104	130	40	181	216	-	557	333	750	28	217	361	526	672	40	590	38,4
US 1" (22,1/25,4)	51	17	110	89	64	415	192	490	4	109	170	335	482	18	400	6,7
US 1 1/2 (34,8/38,1)	57	21	110	89	70	422	195	500	4	109	189	355	502	22	420	6,9
US 2" (47,5/50,8)	76	29	123	114	89	451	224	520	7	132	228	369	512	30	430	9,7
US 2 1/2 (60,2/63,5)	76	35	159	167	89	501	276	590	16	190	298	464	612	37	530	18,5
US 3" (72,9/76,1)	82	35	159	167	95	507	281	600	16	190	304	467	612	37	530	18,5
US 4" (97,4/101,6)	130	40	181	216	146	557	333	750	28	217	361	526	672	40	590	38,4

DIMENSIONS Tube ØA	DCX3 FRACTIONAL MECHANICAL VALVE							Weight in Kg
	B	C	D	G	L	P	Weight in Kg	
US 1/2" (9,4/12,7)	27,5	30	192	215	40	42,5	1,7	
US 3/4" (15,75/19,05)	29	35	195	220	41,5	47,5	1,7	

Tank bottom changeover valves DCX3 FdC

The operating conditions are given for information. Some combinations of extreme operating conditions are not always suitable. It is highly recommended to ask for advice from our technical department.



FEATURES

- Body and plug shape provide the tightest seal to the tank wall without retention area
- Same features as standard DCX3 (floating seal - thick body, etc...)
- Two versions: raising or lowering plug

SPECIFICATIONS

DIMENSIONS

- SMS - DIN - US
from DN 25 (1") to DN 100 (4")

MATERIALS

- Body: stainless steel 1.4404 / 316L
- Shut-off unit: stainless steel 1.4404 / 316L
- Flange: stainless steel 1.4404 / 316L
- Plug seal: PFA
- Body seal: EPDM - fluorinated elastomer (FKM) or silicon
- Actuator: stainless steel 1.4301 / 304

CONNECTIONS

On tank with special welded flange

OPTION

Long stroke actuator for complete disengagement of the plug (recommended for fragile or inconsistent products)

SIGNALLING EQUIPMENT

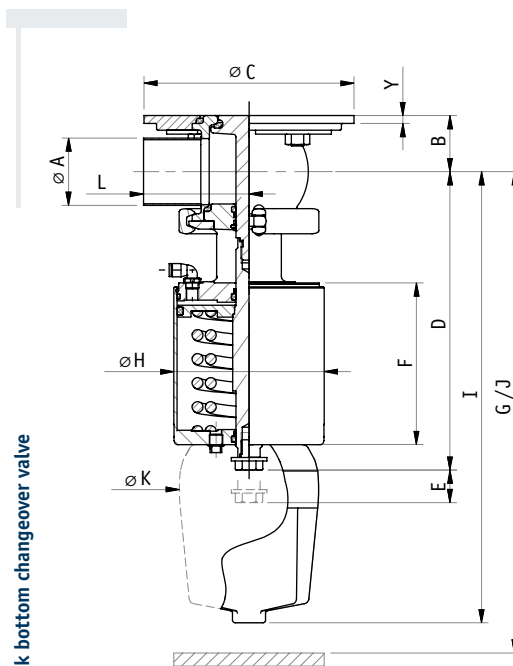
Visible on single or double stainless steel bracket
Point-to-point or AS-i control unit
ICS (from DN 25 to DN 76)
ACS (from DN 25 to DN 104)

SURFACE CONDITIONS

- RA exterior = 1.2 µm (150 grit)
- RA interior = 0.8 µm (180 grit)

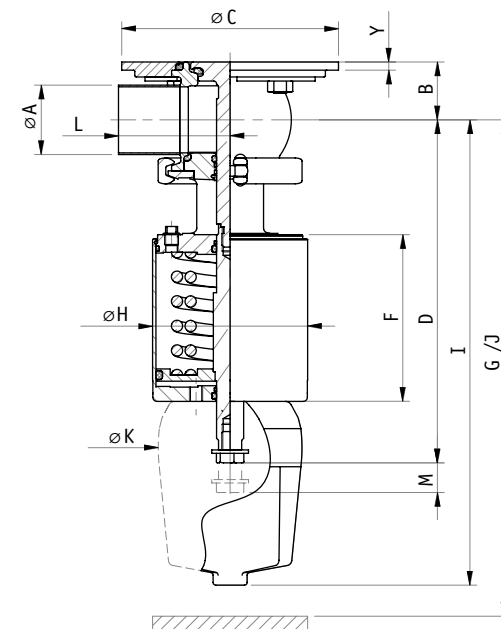
SERVICE CONDITIONS

- Max. temperature: + 140°C/+ 284°F
- Min. temperature: - 5°C/+ 23°F
- Max. working pressure: 7 bar (700 kPa)/102 psi
- Actuator air supply pressure:
min. 5.5 bar (550 kPa)/80 psi
max. 8 bar (800 kPa)/116 psi
- Vacuum resistance: 0.4 cm³/s



Tank bottom changeover valve

DCX3 FdC lowering plug



DCX3 FdC raising plug



Tube ØA	B	ØC	D	E	F	G	ØH	I	J	ØK	L	M	Y	Weight in Kg
				(lowering plug stroke)		(without unit)			(with unit)			(raising plug stroke)		
SMS 22,6/25	29,5	139	189	23,5	109,5	300	89	355	485	104	55	21	6	4,5
SMS 35,6/38	35	139	193,5	25,5	109,5	320	89	362	485	104	70	21	6	5
SMS 48,5/51	42,5	159	226	29,5	123	360	114	391	505	104	82	19,5	6	8,5
SMS 60,3/63,5	48,5	189	275,5	35	159	420	167	441	555	104	105	20,5	6	15
SMS 72/76	55	189	282	35	159	450	167	447	565	104	110	20	6	15,4
SMS 100/104	75	249	337	40	181	600	216	484	722	140	130	20	10	47
DIN 26/29	30,5	139	191,5	22,5	109,5	300	89	355	485	104	55	20,5	6	4,5
DIN 32/35	33,5	139	192	25,5	109,5	300	89	360	485	104	55	28	6	4,7
DIN 38/41	36	139	194	26	109,5	300	89	362	485	104	70	28	6	5,2
DIN 50/53	42,5	159	226	29,5	123	360	114	391	505	104	80	28	6	8,4
DIN 66/70	52	189	279	34,5	159	460	167	443	565	104	108	35	6	15
DIN 81/85	69	249	328	40	181	510	217	454	575	140	115	34,5	10	43
DIN 100/104	75	249	337	40	181	600	216	484	722	140	130	34,5	10	47
US 1" (22,1/25,4)	29,5	139	189	23,5	109,5	300	89	355	485	104	51	35	6	4,5
US 1 1/2 (34,8/38,1)	35	139	193,5	25,5	109,5	320	89	362	485	104	57	35	6	5
US 2" (47,5/50,8)	42,5	159	226	29,5	123	360	114	391	505	104	76	39,5	6	8,5
US 2 1/2 (60,2/63,5)	48,5	189	275,5	35	159	420	167	441	555	104	76	39,5	6	15
US 3" (72,9/76,1)	55	189	282	35	159	450	167	447	565	104	82	39,5	6	15,4
US 4" (97,4/101,6)	75	249	337	40	181	600	216	484	722	140	130	39,5	10	47

Tank bottom mixproof valve VDCI MC FdC

The operating conditions are given for information. Some combinations of extreme operating conditions are not always suitable. It is highly recommended to ask for advice from our technical department.

FEATURES

- Isolates the tank from the rest of the process circuit
- Body and plug shape provide the tightest seal to the tank wall, without retention area
- Same features as VDCI MC (floating seal - thick body, etc...)
- Leakage chamber washed by pulsing the lower plug
- The leak can be viewed thanks to a controlled microvalve
- Leak free opening

SPECIFICATIONS

DIMENSIONS

- SMS - DIN - US from DN 51 (2") to DN 100 (4")

MATERIALS

- Body: stainless steel 1.4404 / 316L
- Shut-off unit: stainless steel 1.4404 / 316L
- Plug seal: PFA
- Other seals: EPDM - fluorinated elastomer (FKM)
- Actuator: stainless steel 1.4301 / 304

CONNECTIONS

- On tank with special welded flange

OPTION

- Steam bearing stem
- Second microvalve to clean the leakage chamber without activating the plugs

SIGNALLING EQUIPMENT

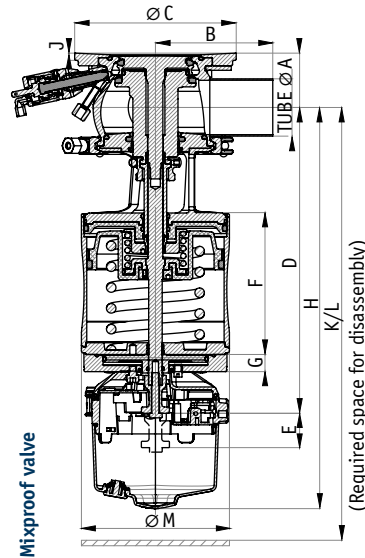
- ACS control top can be adapted

SURFACE CONDITIONS

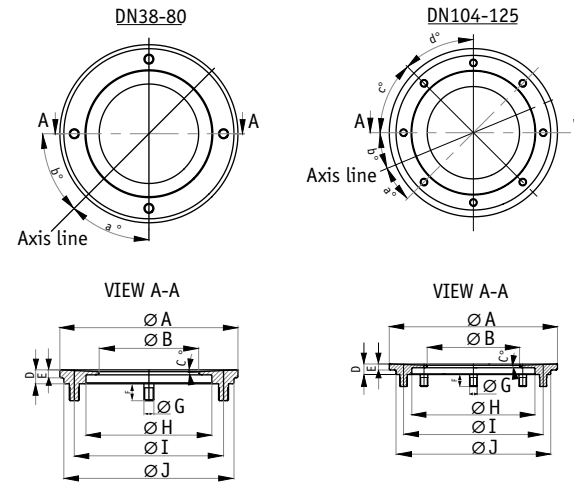
- RA exterior = 1.2 µm (150 grit)
- RA interior = 0.8 µm (180 grit)

SERVICE CONDITIONS

- Max. temperature: + 140°C/+ 284°F
- Temperature differential between the upper line and the lower line: max. + 90°C/+ 194°F
- Min. temperature: - 5°C/+ 23°F
- Max. working pressure permissible in the tank: 4 bar (400 kPa)/58 psi
- Max. working pressure in the valve: 7 bar (700 kPa)/102 psi
- Actuator air supply pressure: 5.5 to 7 bars (500 to 700 kPa)/80 to 102 psi with ACS control top Up to 8 bars (800 kPa)/116 psi with direct supply, according to the conditions of operation
- Vacuum resistance: 0.4 cm³/s



VDCI MC FdC tank bottom



Valve VDCI MC FdC

DN	Tube ØA	B	ØC	D	E (stroke)	F	G	H	I	J	K (without unit)	L (with unit)	ØM	Weight in Kg*
SMS 38	38 x 1,2	88	149	294	33	127	19,5	423	53	8,5	351	473	128	10
SMS 51	51 x 1,25	105	149	294	34	127	19,5	424	53	8,5	392	514	128	10
SMS 63	63,5 x 1,6	130	179	339	39	157	19	468	61	8	490	612	164	21
SMS 76	76,1 x 1,6	130	179	346	38	157	19	475	66	8	501	623	164	21,5
SMS 104	104 x 2	155	224	425	60	196	19	553	81	8	658	780	218	42
DIN 40	40 x 1	105	149	294	34	127	19,5	424	53	8,5	352	474	128	10
DIN 50	53 x 1,5	105	149	294	34	127	19,5	424	53	8,5	392	514	128	10
DIN 65	70 x 2	130	179	342	39	157	19	471	63	8	485	607	164	21,5
DIN 80	85 x 2	155	179	350	39	157	19	479	71	8	527	649	164	22
DIN 100	104 x 2	155	224	425	60	196	19	553	81	8	658	780	218	42
DIN 125	129 x 2	200	224	437	60	196	19	565	93	8	724	846	218	44
US 2"	50,8 x 1,65	105	149	293	33	127	19,5	423	53	8,5	391	513	128	11
US 2" 1/2	63,5 x 1,65	130	179	339	39	157	19	468	61	8	490	612	164	21
US 3"	76,1 x 1,6	130	179	346	38	157	19	475	66	8	501	623	164	21,5
US 4"	101,6 x 2,1	155	224	423	60	196	19	552	82	8	657	779	218	42

*without unit

Flanges VDCI MC FdC

DN	a°	b°	c°	d°	ØA	ØB	C°	D	E	F	ØG	ØH	ØI	ØJ
SMS 38-51	45°	45°	/	/	149	79	6,25°	12,5	8,5	12	M8	99	112	130
SMS 63-76	45°	45°	/	/	179	100	2,75°	14	8	17	M10	126,5	150	171
SMS 104	22,5°	22,5°	45°	45°	224	123	2°	14	8	16	M10	164	186	206
DIN 40-50	45°	45°	/	/	149	79	6,25°	12,5	8,5	12	M8	99	112	130
DIN 65-80	45°	45°	/	/	179	100	2,75°	14	8	17	M10	126,5	150	171
DIN 125	22,5°	22,5°	45°	45°	224	123	2°	14	8	16	M10	164	186	206
US 2"	45°	45°	/	/	149	79	6,25°	12,5	8,5	12	M8	99	112	130
US 2" 1/2 - 3"	45°	45°	/	/	179	100	2,75°	14	8	17	M10	126,5	150	171
US 4"	22,5°	22,5°	45°	45°	224	123	2°	14	8	16	M10	164	186	206